



ADDENDUM #2
UKON WATER COMPANY
450 WEST WATERLINE EXTENSION PROJECT

The following changes are hereby made to the Contract Documents for the above referenced Project:

- **An update Sheet 3 is being provided to replace the original Sheet 3. Additional information has been added to reflect the work needed for the intersection of 450 West/Main and 450 West/100 North.**
- **Please note on the updated bid schedule that the directional bore HDPE pipe size has been modified from 10" HDPE to 8" HDPE**
- **The following items have been added to the Bid Schedule. The updated Measurement and Payment has also been attached:**

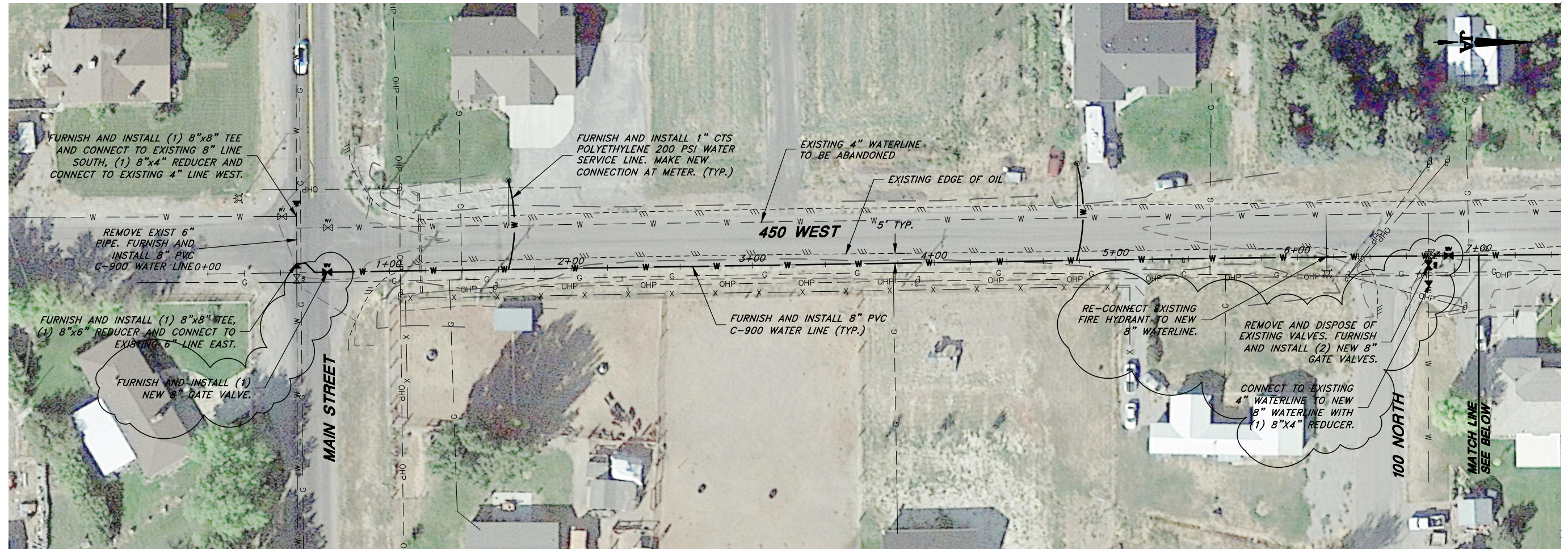
MP303	Abandon Existing Gate Valve	1 ea
MP302	Remove and Dispose of Gate Valve	2 ea
MP609	Raise Valve to Grade w/ Collar	5 ea
MP609	Raise Manhole to Grade w/ Collar	4 ea
MP320a	Connect Exist Fire Hydrant	1 ea
MP617	Shoulder/Driveway Repair	1,200 ton
MP505	Import Trench Material	1,750 ton

- **The following quantity items have been updated:**

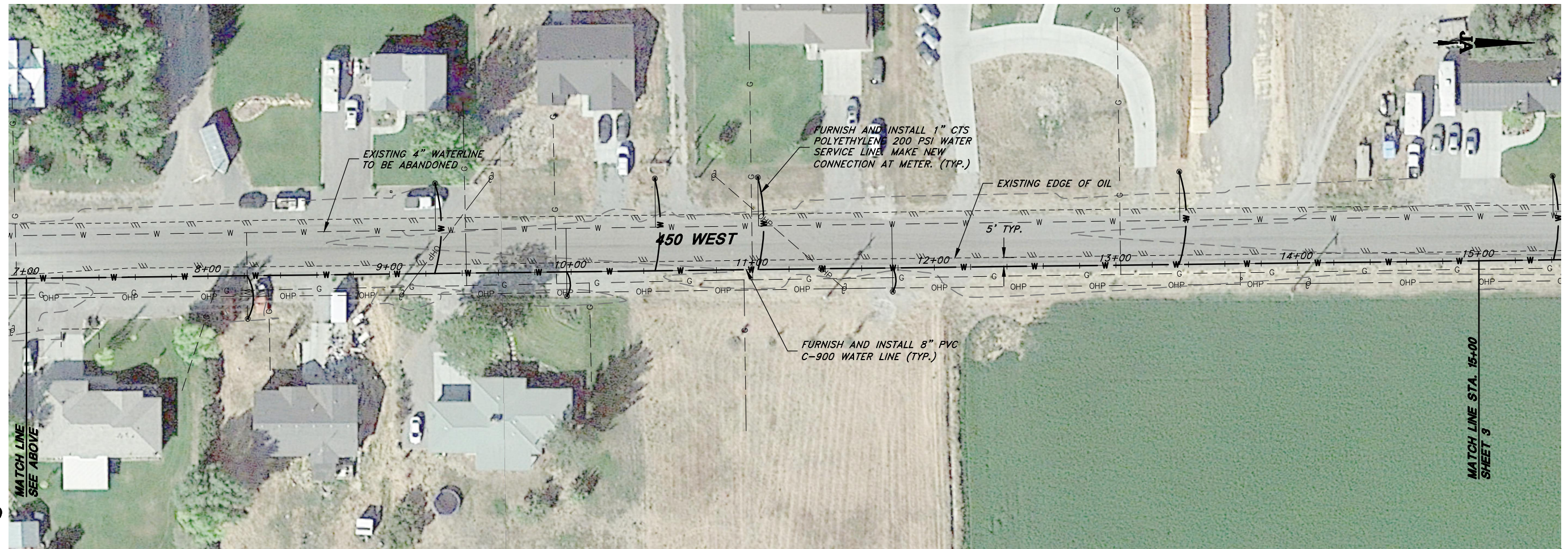
		OLD	NEW
MP319	New 8" Gate Valve	2	5

This Addendum is hereby attached to and made part of the Bidding Documents and each Bidder shall acknowledge receipt of this Addendum on the Bid Form.

A



B



REV.	DATE	APPR.

**BID SCHEDULE
UKON WATER COMPANY
450 WEST WATERLINE EXTENSION**

CONTRACTOR: _____

BASE BID

Item #	M&P Reference*	Bid Item Description	Estimated Quantity	Unit	Unit Price**	Bid Price
450 WEST WATERLINE EXTENSION (OFF-SITE IMPROVEMENTS)						
1	MP001	Mobilization	1	ls	\$	\$
2	MP002	UPDES Storm Water Regulations Compliance (Over One Acre)	1	ls	\$	\$
3	MP005	Traffic Control	1	ls	\$	\$
4	MP007	Construction Staking	1	ls	\$	\$
5	MP310	Plug Abandoned Waterline	1	ea	\$	\$
6	MP303	Abandon Existing Gate Valve	1	ea	\$	\$
7	MP302	Remove and Dispose of Gate Valve	2	ea	\$	\$
8	MP600	Saw Cut Asphalt	800	lf	\$	\$
9	MP602	Remove Asphalt	4,000	sf	\$	\$
10	MP311	New Waterline	9,280	lf	\$	\$
11	MP314	Waterline Loop	2	ea	\$	\$
12	MP315	1" Poly Water Service	575	lf	\$	\$
13	MP319	New 8" Gate Valve	5	ea	\$	\$
14	MP317	Connect New Service to Ex. Meter	13	ea	\$	\$
15	MP325a	New Water Meter Box & Assembly	17	ea	\$	\$
16	MP323	New Air/Vac Valve Station	4	ea	\$	\$
17	MP326a	New Blow-Off Assembly	1	ea	\$	\$
18	MP609	Raise Valve to Grade w/ collar	5	ea	\$	\$
19	MP609	Raise Manhole to Grade w/ collar	4	ea	\$	\$
20	MP320a	Connect Exist Fire Hydrant	1	ea	\$	\$
21	MP313	Waterline Connection (Main St) (8"X8" tee w/ 8"x4" reducer)	1	ea	\$	\$
22	MP313	Waterline Connection (Main St) (8"X8" tee w/ 8"x6" reducer)	1	ea	\$	\$
23	MP313	Waterline Connection (100 North) (8"X8" tee w/ 8"x4" reducer)	1	ea	\$	\$
24	MP612	Asphalt Patch (3" HMA, 8" UTBC)	4,000	sf	\$	\$
25		Obtain required UDOT Encroachment permit	1	ls	\$	\$
26	MP814	Directional Bore 8" HDPE DR11	250	lf	\$	\$
27	MP617	Shoulder/Driveway Repair	1,200	ton	\$	\$
28	MP505	Import Trench Material	1,750	ton	\$	\$

450 WEST WATERLINE EXTENSION (ON-SITE IMPROVEMENTS)

29	MP316	Connect to Ex. Water Service Line	17	ea	\$	\$
30	MP317	Connect to New Water Meter	17	ea	\$	\$
31	MP319	New Shutoff Valve	9	ea	\$	\$
32	MP353u	New Freezeless Yard Hydrant	17	ea	\$	\$
33	MP315a	1" Poly Water Service Pipe (Share)	2,655	lf	\$	\$
34	MP315b	1" Poly Water Service Pipe	846	lf	\$	\$
35	MP327a	Water Service Shared Trench	665	lf	\$	\$
36	MP822a	Temp Relocate Exist Propane Tank	4	ea	\$	\$
37	MP823a	Temp Relocate Existing Shed	8	ea	\$	\$

450 West Waterline Extension Total Base Bid (Items# 1-37): \$ _____

Additive Alternates

Item #	M&P Reference*	Bid Item Description	Estimated Quantity	Unit	Unit Price**	Bid Price

***To go directly to Measurement and Payment click here.**

****Unit Price shall contain no more than 2 decimal points (e.g., \$0.00)**

Bidder acknowledges that (1) each Bid Unit Price includes an amount considered by Bidder to be adequate to cover Contractor’s overhead and profit for each separately identified item, and (2) estimated quantities are not guaranteed, and are solely for the purpose of comparison of Bids, and final payment for all unit price Bid items will be based on actual quantities, determined as provided in the Contract Documents.

1.9 DESCRIPTION OF BID ITEM

M&P Reference	Bid Item	Unit	Payment Includes	Notes
MP001	Mobilization	LS	All costs associated with mobilizing and demobilizing equipment and materials to and from the project site, mobilization, demobilization, establishment of offices, buildings, all OSHA required safety measures, sanitation, and other facilities necessary for the Work, bonds, snow removal, dust control, fees, permits (not specified as paid for elsewhere), administrative services, construction notifications, identifying and marking of construction limits and all costs associated with the Work that are not included in other bid items.	
MP002	UPDES Storm Water Regulations Compliance (Over One Acre)	LS	Compliance with the requirements of the Utah Pollutant Discharge Elimination System (UPDES) program including the Construction General Permit. Compliance includes the preparation of, and amendments to, a Storm Water Pollution Prevention Plan (SWPPP) by the Contractor, or authorized representative. Preparing a complete SWPPP including filing a Notice of Intent (NOI) to begin the project and filing a Notice of Termination (NOT) at the conclusion of the project, maintenance, inspections, and any other work necessary to comply with the SWPPP. Best management practices such as storm water gravel inlet sediment filters, silt fencing, erosion control mats, wash down pads, containment pads, dust abatement, regular clean-up, street sweeping, etc. Includes applications, permits, notifications, and other correspondence associated with the permit process. This item shall cover all aspects of construction.	A recommended SWPPP template can be found on the State's Department of Environmental Quality website.

MEASUREMENT AND PAYMENT

MP005	Traffic Control	LS	All traffic control needed on the job. Includes state and local permitting, sub-contractor mobilization, barricades, traffic signs, portable construction message boards, flaggers, other channelizing devices, and all other measures needed to channel traffic and to protect construction personnel and the public (vehicular and pedestrian) from harm resulting from any construction activities. Necessary notifications to public transportation and emergency service agencies with appropriate notice. Maintain reasonable continuous vehicular and pedestrian access for local residents/businesses throughout the duration of the project, including any notifications needed to communicate construction activities to the local residents/businesses. Preparation and on-going modification of a traffic control plan.	
MP007	Construction Staking	LS	Preparation for and placement of construction stakes necessary to construct the Project. Staking shall include, but not be limited to project limits, right-of-way, easements, centerline, grading, paving, utility piping, fittings, hydrants, valves, bends, manholes, inlet boxes, services, laterals, culverts, structures, fencing, cross sections of all stockpiles, final cross sections for earthwork quantities, reestablishing plan benchmarks, monuments and property corners, setting additional benchmarks as needed, and miscellaneous construction survey work.	The Engineer will provide project design CAD files to the Contractor as requested.
MP302	Remove Water Valve	ea	Removal and disposal of existing water valve as shown on the Drawings. Includes locating valve, unclassified excavation, dewatering, disconnection and protection of existing piping, removal and disposal of concrete collars and thrust blocks where present, backfill to grade, compaction, load, haul, lawful disposal or salvaging of removed valve and other related materials, associated disposal fees, and handling of all active water flows.	

MEASUREMENT AND PAYMENT

MP303	Abandon Water Valve	ea	Removal and lawful disposal of existing valve box, lid and concrete collar. Includes locating valve box, unclassified excavation, backfilling of void to grade with approved material, and compaction.	
MP310	Plug Abandoned Water Line	ea	Locating of existing pipe, unclassified excavation, dewatering, removal of thrust blocks where present, cutting of pipe, plugging the end of the existing pipe with a leak-proof fitting assembly, backfill to grade, and compaction.	

<p>MP311</p>	<p>New Water Line</p>	<p>If</p>	<p>Piping of the type, size and class shown on the Drawings. No classification of excavated materials shall be made, and excavation shall include the removal and subsequent handling of all earth, shale, loose or cemented gravel, loose rock, solid rock, or other materials of whatever nature excavated or otherwise removed in the performance of the project work, dewatering, trench safety measures, lawful disposal of excess material, backfill to grade, compaction, foundation sand, pipe bedding, fittings (tees, bends, reducers, sleeves, couplings, etc.), corrosion protection (bolts, polywrap, etc. - as specified), marking tape, tracer wire when required, thrust restraint, grade controls, all necessary pothole investigation of existing utilities to predetermine any conflicts with other utilities or structures (horizontal or vertical), coordination with Engineer for resolution of predetermined conflicts, flushing, pressure testing, correction of any material or installation-related defect, disinfection, high chlorine removal, and restoration of miscellaneous improvements damaged as a result of completing this item.</p>	<p><i>No payment will be given for the relaying of pipe that could have been avoided through potholing and conflict resolution with the Engineer, nor for the laying of pipe out of sequence. Making adjustments to other pipes or structures in conflict will only be allowed if pipe grade adjustments to the new pipe cannot be made.</i></p> <p><i>Removal of pavement, installation of imported backfill (if required), and installation of new pavement section is paid for under separate items.</i></p>
---------------------	-----------------------	-----------	---	---

MEASUREMENT AND PAYMENT

MP313	Water Line Connection (Hot Tap)	ea	Installation of water line connection via hot tap complete as shown on the Drawings. Includes unclassified excavation, dewatering, backfill to grade, compaction, tapping sleeve and saddle, valve, valve box and lid, tapping of pipe, other required fittings to make a leak-proof connection, foundation sand, corrosion protection, thrust restraint, handling of all active water flows, and restoration of miscellaneous improvements damaged as a result of completing this item.	<i>Raising to grade with concrete collar paid for under a separate item.</i>
MP314	New Water Line Loop	ea	Looping of water line. Includes piping, bends, fittings, and thrust restraint as specified in the Drawings, excavation, dewatering, trench safety measures, cutting of pipe, lawful disposal of excess material, backfill to grade, compaction, foundation sand, pipe bedding, corrosion protection, tracer wire when required, grade controls, all necessary pothole investigation of existing utilities to determine conflicts, coordination with Engineer for resolution of conflicts, and restoration of miscellaneous improvements damaged as a result of completing this item.	

<p>MP315</p>	<p>New Water Service Line</p>	<p>If</p>	<p>Piping of the type, size and class shown on the Drawings. No classification of excavated materials shall be made, and excavation shall include the removal and subsequent handling of all earth, shale, loose or cemented gravel, loose rock, solid rock, or other materials of whatever nature excavated or otherwise removed in the performance of the project work, dewatering, trench safety measures, lawful disposal of excess material, backfill to grade, compaction, foundation sand, pipe bedding, fittings, couplings, connection to meter assembly, corrosion protection, tracer wire when required, grade controls, all necessary pothole investigation of existing utilities to predetermine any conflicts with other utilities or structures (horizontal or vertical), coordination with Engineer for resolution of predetermined conflicts, flushing, correction of any material or installation-related defect, disinfection, high chlorine removal, and restoration of miscellaneous improvements damaged as a result of completing this item.</p>	<p><i>Removal of pavement, installation of imported backfill (if required), and installation of new pavement section is paid for under separate items.</i></p>
<p>MP315a</p>	<p>1" Poly Water Service Pipe (in shared trench)</p>	<p>If</p>	<p>Work completed under this bid item shall be paid for at the contract unit bid price per lineal foot listed in the bidder's proposal and shall be considered complete compensation for all labor, equipment, and materials necessary, including but not limited to: furnishing and installing the 1-inch diameter polyethylene DR9 CTS pipe (200 psi) with stainless steel inserts, and PVC pipe spacers; commissioning of water service (including cleaning and flushing, disinfection and pressure testing); and all other operations and materials required to complete the item in accordance with the plans, technical specifications, and UKON Water Company standards.</p>	<p><i>This bid item does not include excavation or backfill of the trench, which is covered under a separate Bid Item . This bid item only includes the pipe installation where two or more service lines are being installed in the same trench.</i></p>

<p>MP315b</p>	<p>1" Poly Water Service Pipe (in individual trench)</p>	<p>If</p>	<p>Work completed under this bid item shall be paid for at the contract unit bid price per lineal foot listed in the bidder's proposal and shall be considered complete compensation for all labor, equipment, and materials necessary, including but not limited to: providing video/photos of existing condition prior to work; clearing, grubbing, and stripping; excavation; dewatering; shoring; removal and disposal of excavated material; furnishing and installing the 1-inch diameter polyethylene DR9 CTS pipe (200 psi) with stainless steel inserts; commissioning of water service (including cleaning and flushing, disinfection and pressure testing); furnishing, installing, and removing temporary blow-off valves and fittings required for pipeline commissioning; protection of buried utilities; additional potholing as needed; backfilling with import pipe zone material and import trench backfill material; compaction; surface restoration incidental to construction activities associated with this bid item to existing or better condition; and all other operations and materials required to complete the item in accordance with the plans, technical specifications, and UKON Water Company standards. The Contractor shall protect all existing facilities and improvements whether temporary or permanent; including but not limited to: sidewalks, turf, bushes, trees, mailboxes, sewer laterals, septic tanks, risers and access lids, trailers, sheds (unless noted otherwise), propane tanks (unless noted otherwise), BBQ grills, tables, chairs, personal property items, sports equipment, etc.</p>	<p><i>This bid item does not include excavation or backfill of the trench, which is covered under a separate Bid Item.</i></p>
----------------------	--	-----------	--	--

MEASUREMENT AND PAYMENT

MP316	Water Service Line Connection (to Main)	ea	Payment for the new connection shall be made at the contract unit bid price for completion of the work shown on the Contract Drawings and specified herein. Payment shall be considered complete compensation for all labor, equipment, and materials, including but not limited to: cutting, removing and disposing of existing water service line as necessary; furnishing and installing reducer coupler; and all other operations and materials required to complete the item in accordance with the plans, technical specifications, and UKON Water Company standards.	
MP317	Water Service Line Connection (to Meter)	ea	Connection of water service line to water meter complete as shown on the Drawings. Includes unclassified excavation, dewatering, backfill to grade, compaction, connection to meter assembly, fittings required to make a leak-proof connection, foundation sand, corrosion protection, handling of all active water flows, and restoration of miscellaneous improvements damaged as a result of completing this item.	
MP319	New Water Valve	ea	Installation of new water valve of the type, size, and class shown in the Drawings, unclassified excavation, dewatering, backfill to grade, compaction, foundation sand, fittings, corrosion protection, thrust restraint, adjusting to finish grade, and restoration of miscellaneous improvements damaged as a result of completing this item.	<i>Raising to grade with concrete collar paid for under a separate item.</i>
MP320a	Connect Exist Hydrant to Main	ea	Connection of fire hydrant with main line tee, auxiliary line (if replacement is needed), as shown on the Drawings. Includes unclassified excavation, dewatering, lawful disposal of excess material, backfill to grade, compaction, foundation sand, fittings, corrosion protection, thrust restraint, adjusting to final grade, handling of all active water flows, and landscape surface restoration (top soil, grassed areas, sprinkler systems, plants, mulch, rock, etc.).	<i>Raising auxiliary valve to grade with concrete collar paid for under a separate item.</i>

MEASUREMENT AND PAYMENT

MP353u	New Freezeless Yard Hydrant	ea	Payment for the new yard hydrant shall be made at the contract unit bid price for completion of the work shown on the Contract Drawings and specified herein. Payment shall be considered complete compensation for all labor, equipment, and materials, including but not limited to: excavation; dewatering; shoring; removal and disposal excavated material; furnishing and installing yard hydrant assembly, coupler, bends, gravel, filter fabric; connection to existing water service; protection of buried utilities; additional potholing as needed; backfilling with import pipe zone material and import trench backfill material; compaction; surface restoration incidental to construction activities associated with this bid item to existing or better condition; and all other operations and materials required to complete the item in accordance with the plans, technical specifications, and UKON Water Company standards.	
MP323	New Air/Vac Valve Station	ea	Installation of new air/vac valve station complete as shown on the Drawings. Includes unclassified excavation, dewatering, backfill to grade, compaction, connections and piping to water line, valve box and lid, venting components and protective cover, all required fittings, handling of all active water flows, adjusting to final grade, and landscape surface restoration (top soil, grassed areas, sprinkler systems, plants, mulch, rock, etc.).	<i>Raising to grade with concrete collar paid for under a separate item.</i>
MP325a	New Water Meter Box and Assembly	ea	Installation of new meter box and assembly complete as shown on the Drawings. Includes unclassified excavation, dewatering, backfill to grade, compaction, connections to water service line and meter assembly, meter box and lid as specified, all required fittings, valves, handling of all active water flows, adjusting to final grade, and landscape surface restoration (top soil, grassed areas, sprinkler systems, plants, mulch, rock, etc.).	Meter Furnished by City, Curb markers

MEASUREMENT AND PAYMENT

MP326a	New Blow Off	ea	Installation of blow-off box and assembly complete as shown on the Drawings. Includes unclassified excavation, dewatering, backfill to grade, compaction, pipe bedding sand, gravel, box and lid, fittings, thrust restraint, adjusting to final grade, handling of all active water flows, and landscape surface restoration (top soil, grassed areas, sprinkler systems, plants, mulch, rock, etc.).	Raising to grade with concrete collar paid for under a separate item.
MP327a	Water Service Shared Trench	lf	Work completed under this bid item shall be paid for at the contract unit bid price per lineal foot listed in the bidder's proposal and shall be considered complete compensation for all labor, equipment, and materials necessary, including but not limited to: providing video/photos of existing condition prior to work; clearing, grubbing, and stripping; excavation; dewatering; shoring; removal and disposal of excavated material; protection of buried utilities; additional potholing as needed; backfilling with import pipe zone material and import trench backfill material; compaction; surface restoration incidental to construction activities associated with this bid item to existing or better conditions; and all other operations and materials required to complete the item in accordance with the plans, technical specifications, and UKON Water Company standards. The Contractor shall protect all existing facilities and improvements whether temporary or permanent; including but not limited to: sidewalks, turf, bushes, trees, mailboxes, sewer laterals, septic tanks, risers and access lids, trailers, sheds (unless noted otherwise), propane tanks (unless noted otherwise), BBQ grills, tables, chairs, personal property items, sports equipment, etc.	<i>This bid item does not include furnishing and installing the water service piping, which is covered under separate bid item. This bid item only applies for trenches where two or more water service lines are being installed together.</i>
MP505	Import Trench Backfill	ton	Importing and placement of backfill material in utility trenches as directed by the Engineer. Includes loading and unloading, hauling, stockpiling, backfill to grade, compacting, trench safety measures, and dust control.	

MEASUREMENT AND PAYMENT

MP600	Saw Cut Asphalt	lf	Saw cutting asphalt up to 6" thick as shown on the Drawings. Includes utility locating and protection, saw cutting, and water.	<i>Thicknesses greater than 6" shall be paid based on proportional thickness, calculated by dividing the unit price by 6" to get a \$/in depth cost, then multiplying by the actual thickness cut.</i>
MP602	Remove Asphalt	sf	Asphalt removal as shown on the Drawings. Includes removal of asphalt including concrete collars where present, loading, haul, and lawful disposal.	<i>See Bidding Schedule and/or Drawings for approximate thickness.</i>
MP609	Pre-Lower Manhole / Valve / Utility Box / Monument	ea	Pre-lowering of manholes, valves, boxes and/or monuments as shown on the Drawings. Includes preconstruction location of monuments by a licensed surveyor, excavation, removal and lawful disposal of existing concrete or asphalt pavement around the item, storage of removed items, lowering, covering, placement of material over the item once it is lowered, marking of item, and locating of pre-lowered item following construction.	
MP612	Asphalt Patch (3" HMA, 8" UTBC)	sf	Patching of removed asphalt areas as shown on the Drawings or as directed by an authorized Owner representative. Includes preparation, grading, and compaction of underlying subgrade, application of tack coat on a clean asphalt edge, loading, haul, installation and compaction of UTBC and HMA.	<i>Saw cutting and removal of asphalt and road base is paid for under a separate item.</i>

MEASUREMENT AND PAYMENT

MP613	Raise Valve to Grade with Concrete Collar	ea	Raising manholes, valves, boxes and/or monuments to grade as shown on the Drawings. Includes removal and lawful disposal of asphalt and cover material, excavation, cleaning out of any excess material inside manhole, valve, box, or monument; backfill, compaction, saw cutting edge of asphalt for concrete collar, grade rings, replacement of removed items to finished grade, constructing concrete collar, protection, and traffic control until concrete has had suitable time to cure. Monuments to be reestablished by a licensed surveyor including any recordation fees.	
MP617	Untreated Base Course (UTBC)	ton	Importing and placement of untreated base course to the thicknesses listed in the Bidding Schedule and shown on the Drawings. Includes loading and unloading, hauling, stockpiling, grade controls, rough and fine grading, rolling, compaction, and dust control.	<i>UTBC removed for final paving shall be salvaged to the Owner unless otherwise authorized.</i>
MP822a	Temporarily Relocate Existing Propane Tank	ea	Payment for the temporarily relocate existing propane tank shall be made at the contract unit bid price for completion of the work shown on the Contract Drawings and specified herein. Payment shall be considered complete compensation for all labor, equipment, and materials, including but not limited to: coordination with owner; providing video/photos of existing condition prior to work; disconnection and reconnection of service lines to trailer; protection of the existing tank; relocating tank to install new water service; returning tank to original location; and all other operations and materials required to complete the item in accordance with the plans, and technical specifications.	

MEASUREMENT AND PAYMENT

MP823a	Temporarily Relocate Existing Shed	ea	Payment for the temporarily relocate existing shed shall be made at the contract unit bid price for completion of the work shown on the Contract Drawings and specified herein. Payment shall be considered complete compensation for all labor, equipment, and materials, including but not limited to: coordination with owner; providing video/photos of existing condition prior to work; protection of the existing shed; relocating shed to install new water service; returning shed to original location; and all other operations and materials required to complete the item in accordance with the plans, and technical specifications.	
	Obtain Permits	ea	Obtaining all necessary UDOT encroachment permits. Payment shall be full compensation for applying and obtaining the permit together with complying with any and all UDOT requirements within the State Highway ROW during the course of construction.	

MP814	Directional Drilled Pipe	lf	Horizontal directional drilled pipe of the type, size, and class listed in the Bidding Schedule and shown on the Drawings. Includes locating and protecting existing structures, utilities, and property, site preparation, excavation, dewatering, and backfill of pits, trench safety measures, installation and maintenance of drilling equipment, pilot hole construction, reaming, drilling fluid injection and management, pipe installation and fusing, post construction TV inspection and mandrel testing, pressure and leakage testing, flushing, and surface restoration.	<i>Contractor shall be responsible for removal and disposal of drill fluid breakouts. Damage resulting from the drilling activities shall require complete restoration to the satisfaction of the Owner. Any adaptors or couplings necessary for placement of fittings and valves shall not be paid for separately. No separate payment will be made for cleanup or restoration due to damage caused by Contractor's operations.</i>
--------------	--------------------------	----	--	--

END OF SECTION