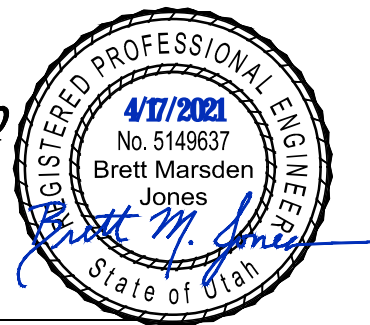


UKON WATER COMPANY STANDARD DRAWINGS AND TECHNICAL SPECIFICATIONS



SUBMITTED & RECOMMENDED



Brett M. Jones

BRETT M. JONES, P.E.
WATER COMPANY ENGINEER

SEAL

APPROVAL

B. Shaffer

BRIAN SHAFFER
PRESIDENT UKON WATER COMPANY

4/29/2021
DATE

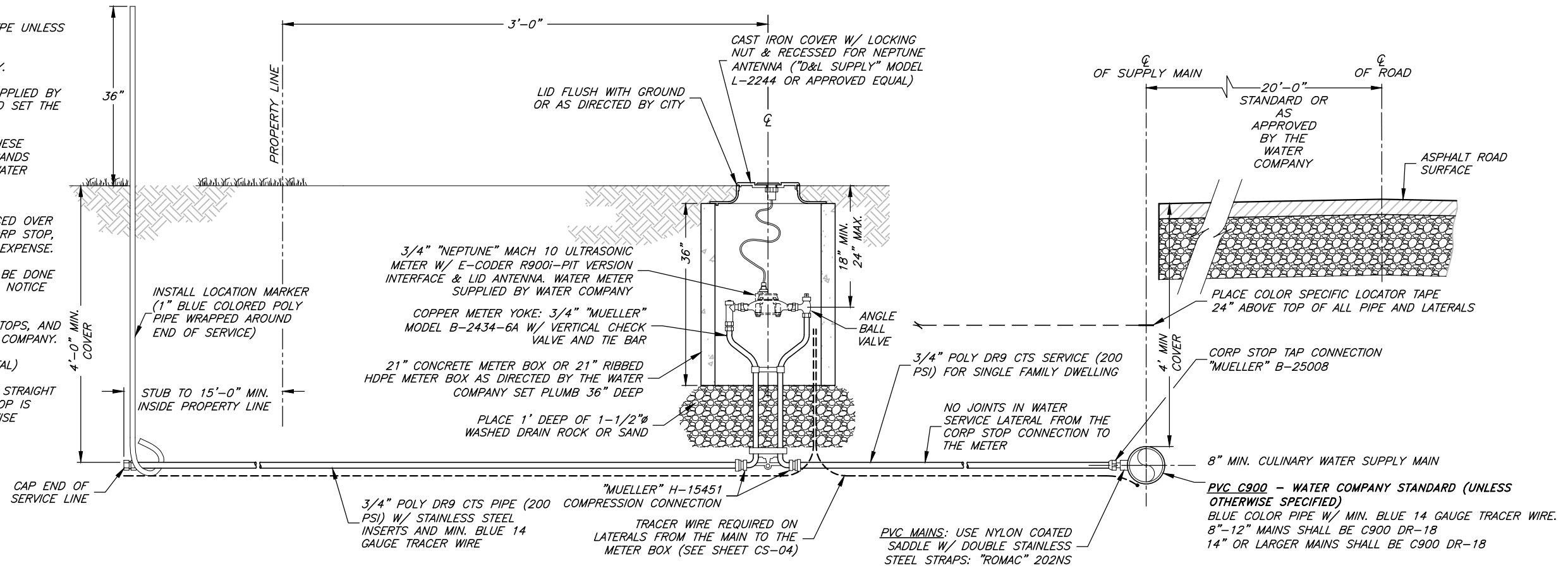
Index of Drawings

- 1 TITLE PAGE & INDEX OF DRAWINGS
- 2 CULINARY WATER - RESIDENTIAL WATER SERVICE DETAILS
- 3 CULINARY WATER - FIRE HYDRANT, GATE VALVE, AND AIR/VACUUM RELIEF STATION DETAILS
- 4 CULINARY WATER - TRACER WIRE INSTALLATION DETAILS
- 5 CULINARY WATER - THRUST BLOCK, WATERLINE LOOP, PIPE TRENCH, & MISC. VAULT DETAILS

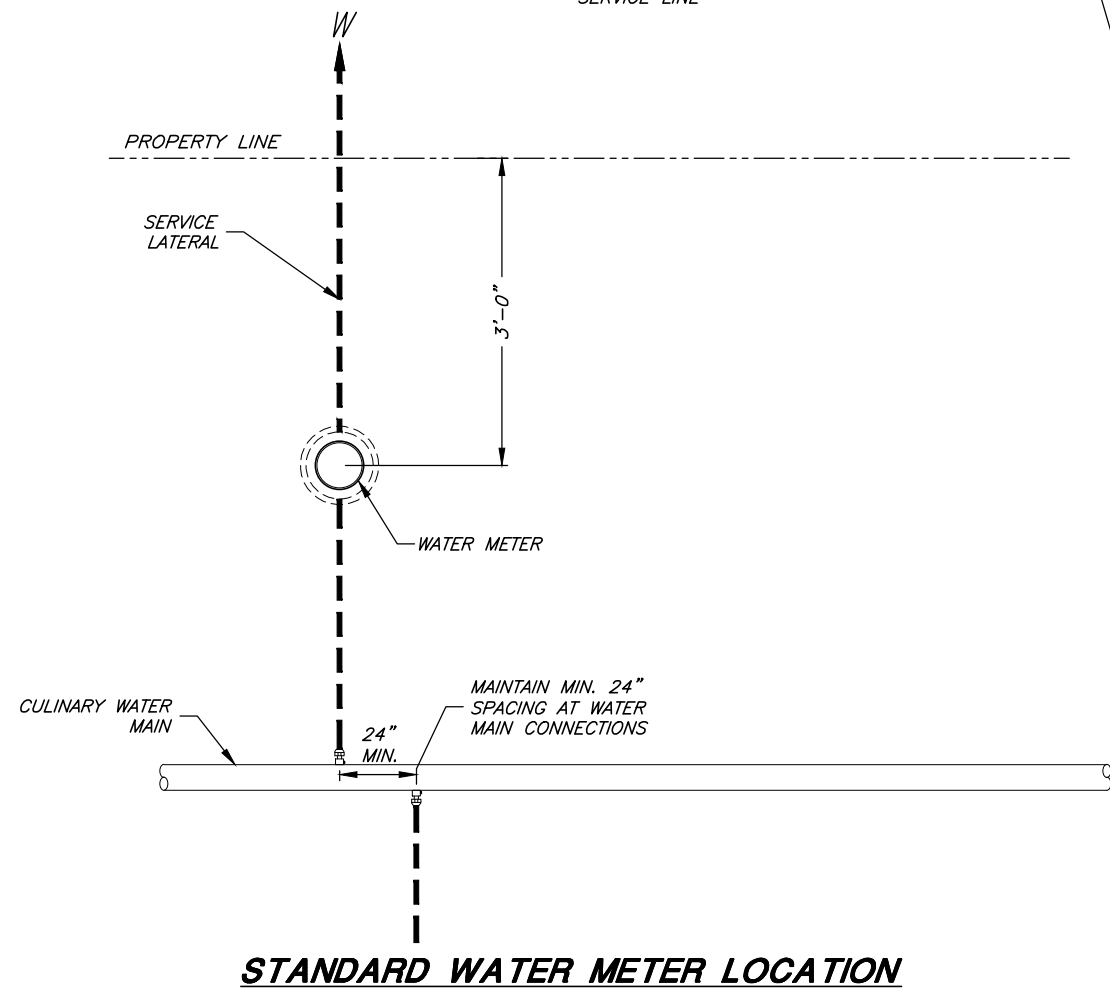
**1ST ADDITION
APRIL 2021**

GENERAL NOTES:

1. ALL FITTINGS SHALL BE "MUELLER" COMPRESSION TYPE UNLESS OTHERWISE NOTED.
2. "BLUE" BOLTS AND NUTS ARE REQUIRED BY THE CITY.
3. ALL SUPPLIES, LABOR, MACHINERY, ETC. WILL BE SUPPLIED BY THE CONTRACTOR. WATER COMPANY WILL SUPPLY AND SET THE METER ON ALL CONNECTIONS.
4. ALL SPECIFIED BRANDS OF MATERIALS SHOWN ON THESE DRAWINGS ARE "STANDARDS." OTHER EQUIVALENT BRANDS MAY BE USED WITH THE PRIOR APPROVAL OF THE WATER COMPANY.
5. CULINARY WATER METERS SHALL NOT BE LOCATED WITHIN THE DRIVEWAY AREA. IF A DRIVEWAY IS PLACED OVER AN EXISTING METER, THE "ENTIRE" SERVICE LINE, CORP STOP, AND METER SHALL BE RELOCATED AT THE OWNER'S EXPENSE.
6. INSPECTION OF ALL WATER LINE INSTALLATIONS WILL BE DONE BY THE WATER COMPANY, WITH A 48 HOUR MINIMUM NOTICE REQUIRED PRIOR TO START OF WORK.
7. THE USE OF "FORD" METER SETTER, CORPORATION STOPS, AND COMPRESSION FITTINGS IS ACCEPTED BY THE WATER COMPANY.
8. SERVICE LINES ARE TO BE TAPPED LEVEL (HORIZONTAL).
9. WHEN MOVING A SERVICE, A MIN. OF 18 INCHES OF STRAIGHT PIPE OUT OF THE SETTER AND/OR CORPORATION STOP IS REQUIRED BEFORE THE GOOSENECK UNLESS OTHERWISE APPROVED BY THE WATER COMPANY.



RESIDENTIAL WATER SERVICE AND METER
WATER COMPANY STANDARDS



Brett M. Jones
WATER COMPANY ENGINEER
4/29/2021
DATE

B. S. Smith
APPROVED
UKON WATER PRESIDENT
4/29/2021
DATE

SCALE:
N.T.S.

DESIGNED KLJ
DRAWN BEB
CHECKED BKJ

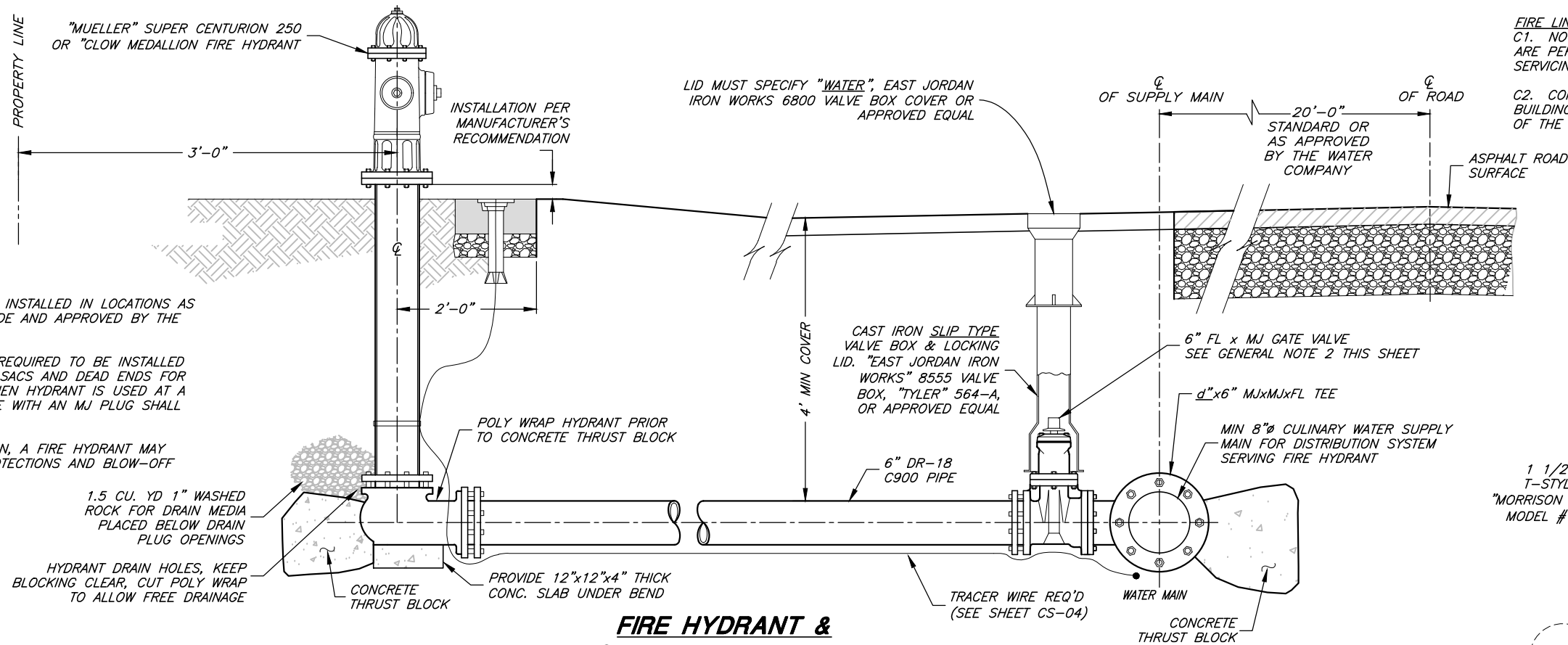
J&A JONES & ASSOCIATES
CONSULTING ENGINEERS
6080 Fashion Point Drive
South Ogden, Utah 84403 (801) 476-9767



UKON WATER COMPANY
WATER COMPANY STANDARDS

CULINARY WATER - RESIDENTIAL WATER SERVICE DETAILS

SHEET:
2
OF - SHEETS
0



FIRE LINE NOTES:
 C1. NO WATER SERVICE OR FIRE LINES TO BUILDINGS ARE PERMITTED TO CONNECT TO AUXILIARY LINES SERVICING FIRE HYDRANTS.
 C2. COMMERCIAL FIRE LINES FROM THE MAIN TO BUILDING SHALL BE SEPARATE LINES AND NOT PART OF THE WATER SERVICE LATERAL.

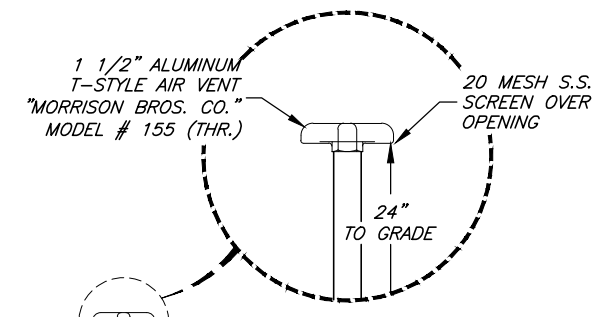
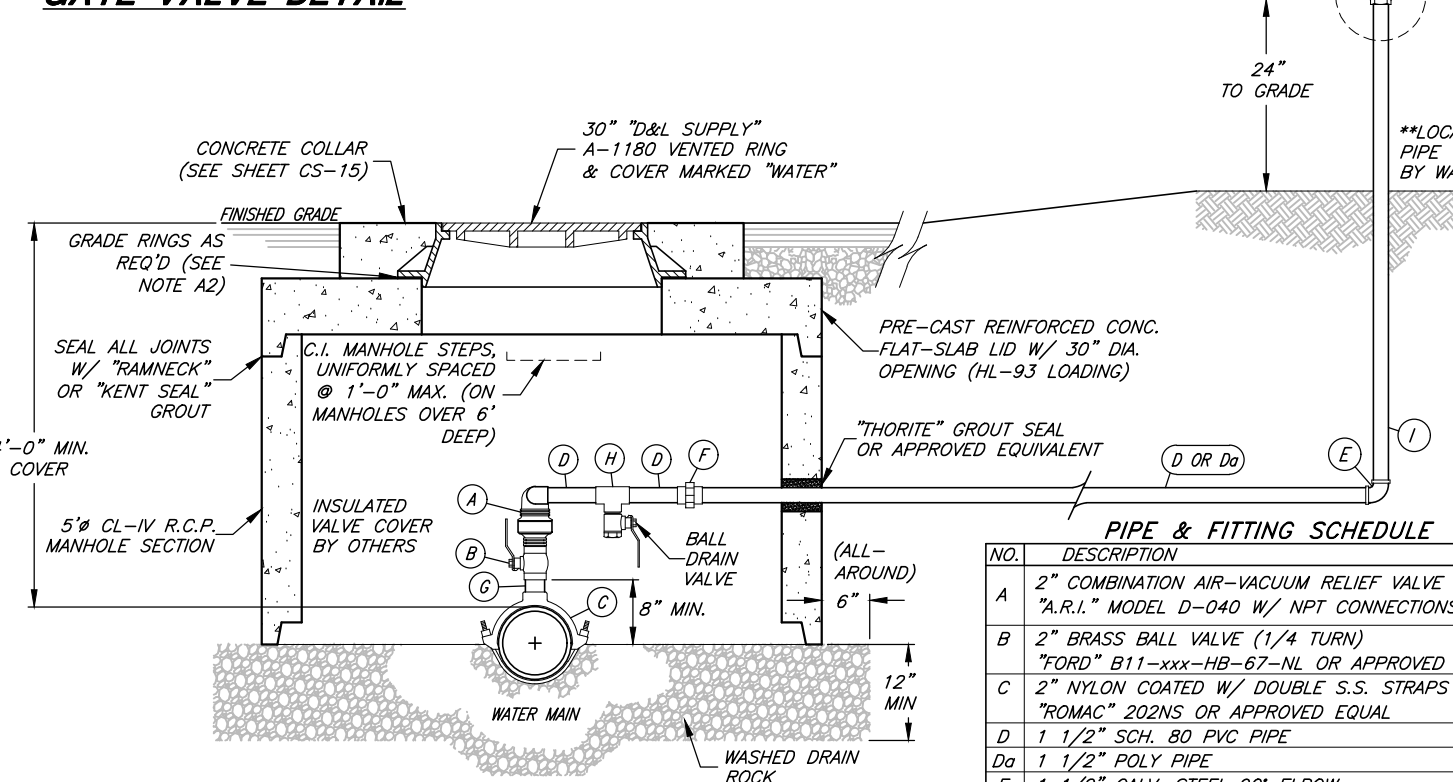
FIRE HYDRANT NOTES:
 B1. FIRE HYDRANTS ARE TO BE INSTALLED IN LOCATIONS AS REQUIRED BY THE FIRE CODE AND APPROVED BY THE WATER COMPANY.
 B2. FIRE HYDRANTS ARE ALSO REQUIRED TO BE INSTALLED AT THE ENDS OF CUL-DE-SACS AND DEAD ENDS FOR BLOW-OFF PURPOSES. WHEN HYDRANT IS USED AT A DEAD-END LOCATION, A TEE WITH AN MJ PLUG SHALL BE INSTALLED.
 B3. DEPENDING ON ITS LOCATION, A FIRE HYDRANT MAY SERVE FOR BOTH FIRE PROTECTIONS AND BLOW-OFF PURPOSES.

GENERAL NOTES:

- "BLUE" BOLTS AND NUTS ARE REQUIRED BY THE CITY.
- ALL WATER MAIN AND HYDRANT GATE VALVES TO BE AWWA C509 RESILIENT WEDGE "MUELLER" A-2361 OR "CLOW" 2639 VALVES (ANY CHIPS IN THE VALVE FACTORY COATING DUE TO SHIPPING/INSTALLATION MUST BE REPAIRED USING AN APPROVED EPOXY COATING)
- VALVES OVER 6' FEET DEEP REQUIRE A NUT EXTENSION.
- ALL SPECIFIED BRANDS OF MATERIALS SHOWN ON THESE DRAWINGS ARE "STANDARDS." OTHER EQUIVALENT BRANDS MAY BE USED WITH THE PRIOR APPROVAL OF THE WATER COMPANY.
- PIPES, JOINTS, FITTINGS, VALVES, & FIRE HYDRANTS SHALL CONFORM TO ANSI / NSF 61.
- FIRE HYDRANTS SHALL NOT BE LOCATED WITHIN 10 FEET OF A SANITARY SEWER OR WITHIN 10 FEET OF STORM DRAIN WHERE POSSIBLE.
- ALL WATER SYSTEM MATERIALS SHALL BE NEW (DISCOLORED PIPE OR PIPE MATERIALS STOCKPILED LONGER THAN 1 YEAR WILL NOT BE ACCEPTED BY THE WATER COMPANY); USED MATERIALS ARE NOT ALLOWED.

AIR/VACUUM RELIEF STATION NOTES:

- THE USE OF AN "APCO" 145C HEAVY-DUTY COMBINATION AIR VAC IS ACCEPTED WHEN APPROVED BY THE WATER COMPANY. UPSIZE VENT PIPE, AIR VENT AND FITTINGS (ITEMS D, E, F, H AND I) TO 2" DIA. AND GALVANIZED STEEL WHEN USING ALTERNATE VALVES.
- NO MORE THAN 12" OF GRADE RINGS TO BE ALLOWED ON ANY MANHOLE.
- A DECORATIVE AIR VENT COVER W/ A TAMPER RESISTANT CAP MAY BE USED, WHEN APPROVED BY THE WATER COMPANY. THIS IS A CASE SPECIFIC ITEM AND THE DESIGN MUST BE SUBMITTED AND APPROVED BY THE WATER COMPANY PRIOR TO INSTALLATION.



PIPE & FITTING SCHEDULE

NO.	DESCRIPTION	FITTING
A	2" COMBINATION AIR-VACUUM RELIEF VALVE "A.R.I." MODEL D-040 W/ NPT CONNECTIONS	THR.
B	2" BRASS BALL VALVE (1/4 TURN) "FORD" B11-xxx-HB-67-NL OR APPROVED EQUAL	THR.
C	2" NYLON COATED W/ DOUBLE S.S. STRAPS SERVICE SADDLE "ROMAC" 202NS OR APPROVED EQUAL	
D	1 1/2" SCH. 80 PVC PIPE	THR.
Da	1 1/2" POLY PIPE	THR.
E	1 1/2" GALV. STEEL 90° ELBOW	THR.
F	1 1/2" SCH. 80 PVC UNION	THR.
G	2" BRASS PIPE	THR.
H	1 1/2" SCH. 80 PVC TEE	THR.
I	1 1/2" GALV. STEEL PIPE	THR.



APPROVED
 BRETT M. JONES
 WATER COMPANY ENGINEER
 4/29/2021
 DATE

SCALE:
 N.T.S.

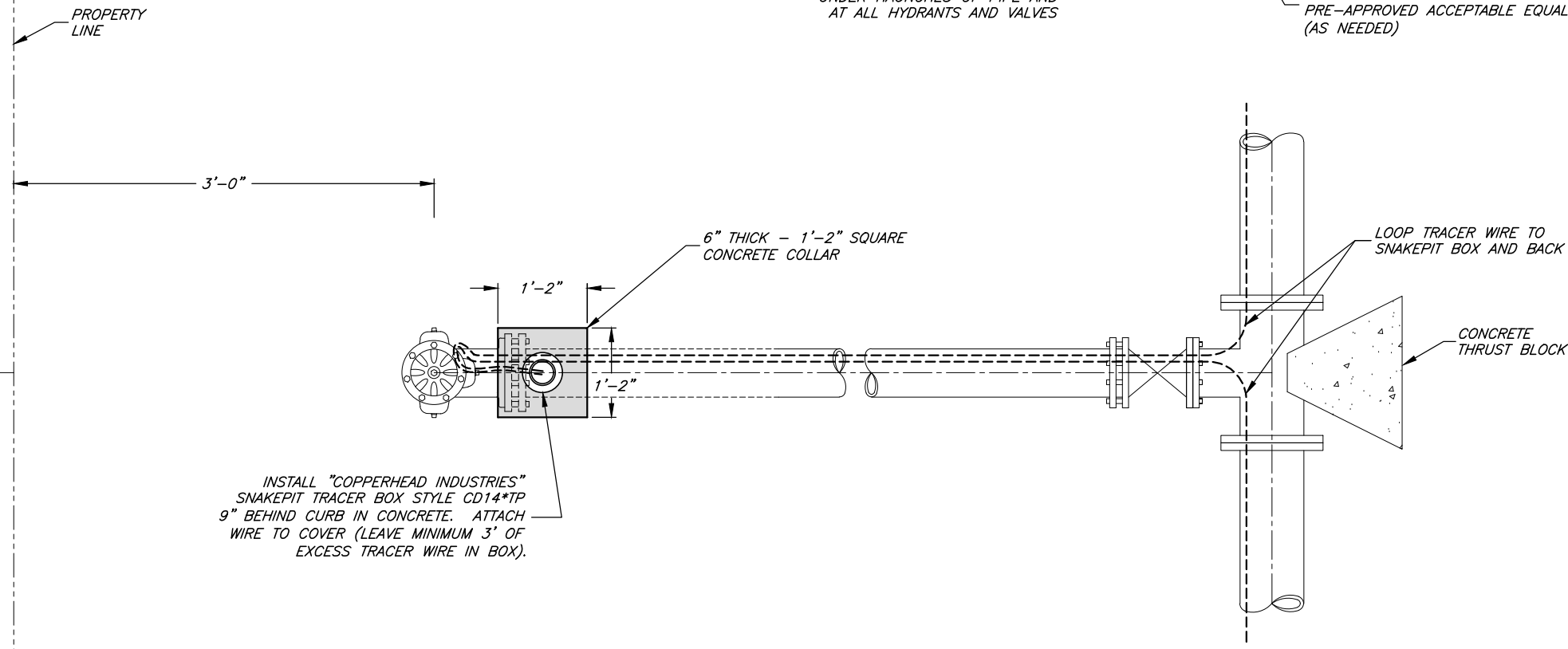
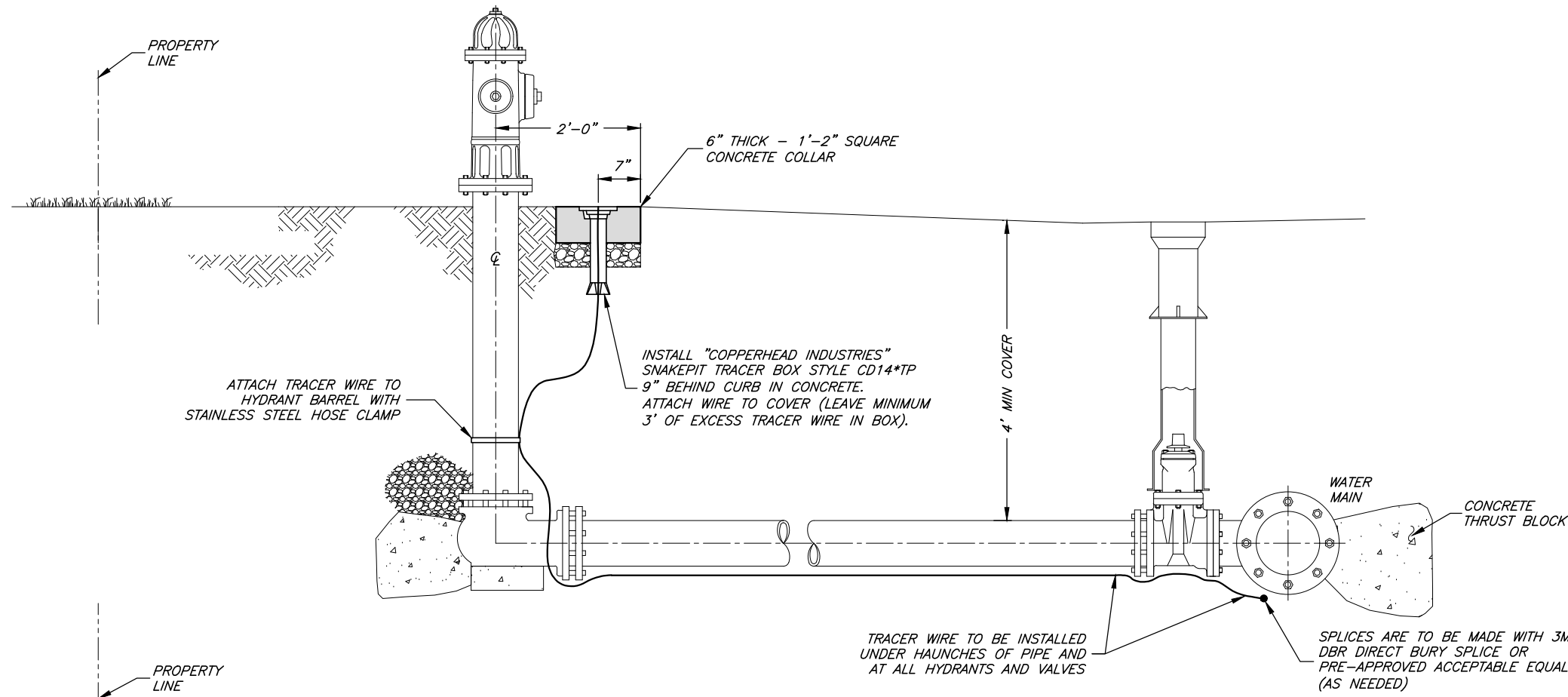
DESIGNED: KLJ
 DRAWN: BEB
 CHECKED: BKJ

J&A
 JONES & ASSOCIATES
 CONSULTING ENGINEERS
 6080 Fashion Point Drive
 South Ogden, Utah 84403 (801) 476-9767



UKON WATER COMPANY
 WATER COMPANY STANDARDS
CULINARY WATER - FIRE HYDRANT, GATE VALVE, AND AIR/VACUUM RELIEF STATION DETAILS

SHEET:
3
 OF - SHEETS
 0

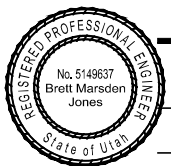


NOTES:

1. ALL WATERLINES SHALL HAVE A MINIMUM 14 GA. INSULATED TRACER WIRE INSTALLED UNDER THE HAUNCHES OF THE PIPE PRIOR TO BACKFILLING.
2. TRACER WIRES SHALL TERMINATE AT ALL FIRE HYDRANTS. AT SERVICE SADDLES AND TAPPING SLEEVES, THE TRACER WIRE SHALL NOT BE ALLOWED TO BE PLACED BETWEEN THE SADDLE AND THE PIPE. A GROUNDING ROD SHALL BE INSTALLED AT ALL TRACER SYSTEM TERMINAL POINTS.
3. TRACER WIRE SHALL BE COPPER WIRE WITH BLUE INSULATION RATED FOR DIRECT BURIAL. ALL WIRE CONNECTORS SHALL BE 3M DBR DIRECT BURY SPLICE OR PRE-APPROVED ACCEPTABLE EQUAL AND SHALL BE WATERTIGHT TO PROVIDE ELECTRICAL CONTINUITY.
4. ALL TRACER WIRE SHALL BE TESTED FOR CONTINUITY IN THE PRESENCE OF THE PUBLIC WORKS INSPECTOR PRIOR TO ASPHALT PLACEMENT. ANY TRACER WIRE FOUND NOT TO BE CONTINUOUS AFTER TESTING SHALL BE REPAIRED OR REPLACED BY THE CONTRACTOR PRIOR TO ASPHALT PLACEMENT.

TRACER WIRE INSTALLATION

CITY STANDARD STREET SECTION (CURB & GUTTER)



Brett M. Jones
WATER COMPANY ENGINEER
4/29/2021
DATE

BS APPROVED
UKON WATER PRESIDENT
4/29/2021
DATE

SCALE:
N.T.S.

DESIGNED *KLJ*
DRAWN *BEB*
CHECKED *BKJ*



CONSULTING ENGINEERS

6080 Fashion Point Drive
South Ogden, Utah 84403 (801) 476-9767



UKON WATER COMPANY
WATER COMPANY STANDARDS

CULINARY WATER - TRACER WIRE INSTALLATION DETAILS

SHEET:
4
OF - SHEETS
0

